



VIC'S CRANE & HEAVY HAUL

LIFTING SAFETY TO A HIGHER LEVEL



◀ **ENTER TO WIN**

A VIC'S BRANDED JACKET!

Sign up to receive our quarterly newsletter and you'll be automatically entered to win. Go to vicsco.com/win to sign up!

Rosemount Office
(651) 423-7400

3000 145th St. E | Rosemount, MN 55068

Hibbing Office
(218) 403-0008

604 West 41st St. | Hibbing, MN 55746

Twin Ports Office
(715) 919-2025

1105 Elm Ave | Superior, WI 54880



Josh Horsch, Vice President

Kicking off 2020

Greetings from everyone here at Vic's. The first months of 2020 have flown by, and while we're excited to update you on our plans, we also want to acknowledge the difficult situation that the spread of COVID-19 has brought to so many people in our country. As always, the safety of our workforce is a priority here at Vic's. We are closely monitoring the situation as it changes. At the time this newsletter will be published, the majority of our office staff is working remotely, and our crew is taking every precaution to meet COVID-19 safety standards on the job site. To read our full statement, please visit vicsco.com/covid-19-response. Keep reading to see how we're helping supply local nurses with PPE items on page 4.

On the topic of regular business, we hope many of you have heard the announcement of our new Twin Ports location! We are thrilled to be extending our business further into Minnesota and Wisconsin, and we know this location will be an excellent addition to our company. We've already completed many projects in this area over the years, so opening an office was a natural next step. If you would like to know more about this project, you can read all about it on page 1.

One of our goals for this year is to continue to keep you updated on all the interesting projects we get to work on. From complicated hauls and lifts in crowded urban areas like Downtown Minneapolis to fun seasonal jobs like placing the Bentleyville Christmas tree in Duluth, we want you to be in the know. This month, we share one of our most involved lifts in recent history, moving some HVAC equipment to the top of the 315-foot Rand Tower in Minneapolis. Check it out on page 2. Meanwhile, you can read about a few projects our Hibbing team has completed on page 5 and one of our crew members even spent some time talking to construction students about the importance of safety while on vacation in the country of Georgia.

Now that the weather is warming up, construction season should be heating up too. Everyone at Vic's is ready to shift into high gear, so call us with any estimating or scheduling needs.

A handwritten signature in black ink, appearing to read "Josh Horsch".

Josh Horsch
Vice President



Vic's Opens New Location in Twin Ports Area

Earlier this year, Vic's opened its newest location in the Twin Ports area. We were thrilled for this chance to continue to build our current customer relationships and create new ones in this beautiful section of Wisconsin and Minnesota.

Located at 1105 Elm Ave. in Superior, our new branch will focus on bringing our well-respected crane, rigging, and hauling business to the mines, refineries, pipelines, power plants and general construction companies in the Twin Ports area that require these services. With easy access to truck routes and a mobile fleet of 45-ton to 250-ton cranes and other equipment, we're ready to answer almost any lifting, rigging or hauling need. Combined with our Hibbing location, we can service northern Minnesota and the Twin Ports area better than anyone.

Projects for the Twin Ports office are already well underway. For example, we're helping with the construction of Central Flat, a mixed-use property featuring

136 apartments and 12,000-square-feet of retail space and parking in downtown Superior.

The Twin Ports location is led by Jim Briggs. He joins the Vic's team with more than 25 years of experience providing equipment solutions to the construction and industrial markets in the area. He also has 16 years of managerial experience, in addition to eight years working in the crane industry. He is well-connected in the Twin Ports area and has relationships with most construction-related businesses in the region. We're very excited to have him lead our Twin Ports office and we know he will do a fantastic job.

Choosing to open a new location in Twin Ports was a no-brainer for us at Vic's. We've had many years of working with the exceptional companies in this area and look forward to many more. Be sure to subscribe to our newsletter and follow us on social media to hear about all our Twin Ports projects and news as the year goes on.





Vic's Goes to Work in Downtown Minneapolis on Rand Tower

This past November, nine Vic's employees journeyed into Downtown Minneapolis for work. But instead of heading inside one of the metro's many skyscrapers, they were working to get on top of one. Vic's was hired by Master Mechanical to lift HVAC equipment onto the roof of the 315-foot Rand Tower. The project ended up being one of the most complicated tasks that Vic's has completed in quite some time.

Planning for a crane job in a busy downtown metro was complex, but no one has more experience navigating both a difficult lift and City regulations than Vic's. In addition to considering limited spacing on the site, road closures and skyway locations, Vic's also had to coordinate with City staff, metro transit, police, and fire departments

to work around sporting events and concert schedules. A 550-ton crane with 176,300-pound counterweight and nearly 219 feet of luffing jib was required due to the confined space, and had to be assembled on site. Even with two road closures, Vic's had just enough room to be able to make the lift and was the only company in the area with the expertise and equipment to do so.

Though the actual project took just three days including set up and demobilization, Vic's staff took their time making sure the lift would be safe. From measuring the skyways to taking underground hazards into account and working closely with City staff, Vic's employees made a complicated lift look like just another day at the office.







Vic's Donates PPE Supplies to MN Nurses Through Minnesota Subcontractors Association

We're all aware that the spread of COVID-19 has put a strain on our nation's healthcare system. As a result, many healthcare facilities are experiencing shortages of personal protection equipment (PPE). PPE helps healthcare workers stay safe while they take care of people experiencing contagious diseases. PPE also has uses outside the health system. Vic's Crane & Heavy Haul uses this kind of equipment to help protect employees on certain job sites.

Vic's is committed to helping our community, so when we heard about the Minnesota Subcontractors Association (MSA) collection of PPE equipment, we were ready to answer the call! Along with eleven other regional businesses, Vic's helped the MSA donate over 2,100 PPE items to the MN Nurses Association. The items that Vic's donated included Tyvek suits, eye protection, and N95 masks. The organization of inventory and scheduling of the delivery was led by one of Vic's safety managers, Eric Evenson.

"Vic's noted that we had several of the requested items available and thought that getting the PPE to the medical professionals who needed them most was an important contribution," says Rob Blankenship, Vic's safety director. The nurses who received the much-needed materials were happy to have the support of local businesses. If you or a loved one is a healthcare professional or essential employee during this time, we'd like to thank you for your work.

As COVID-19 continues to change the way we live and work, Vic's wants to assure our customers and employees that we are monitoring this situation closely. The majority of our office staff is working remotely, and our crew is taking every precaution to meet COVID-19 safety standards on our job sites. For more details about our COVID-19 response, please go to vicso.com/covid-19-response.



▲ Eric Evenson, one of Vic's safety managers, drops off the PPE donations.



Hibbing office out on the Range

The Hibbing office has been extremely busy in recent months, with both crane and heavy haul projects taking place on the Iron Range and across the Midwest.

▲ Grove GMK6350 picking a mining truck box to be re lined.

▼ Manitowoc 2250 300-ton crawler crane and a Grove GMK6350 350-ton hydraulic all terrain crane, used to lift and transport a 300,000-pound coal box for Lake Superior Warehousing in Duluth, MN.



▲ Manitowoc 2250 assembling a P&H/JoyGlobal mining shovel

▼ Grove RT890E 90 ton Rough Terrain crane and Grove GMK6350 All Terrain crane servicing a mining shovel





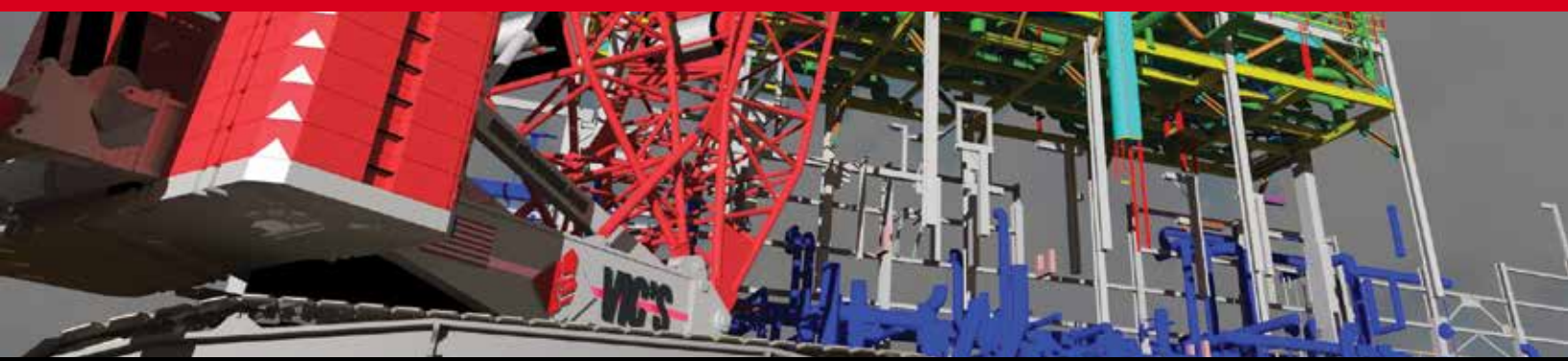
Vic's Keeps Safety A Priority... Worldwide

When it comes to Vic's Crane and Heavy Haul operations, safety is always priority number one. We're glad to know that our employees carry this value with them wherever they go.

A few months ago, Vic's employee Matt Dreckman took a trip halfway across the world to the country of Georgia. There, he was invited by a friend to speak with students at Construction College in the municipality of Zestafoni. Matt spoke about the importance of safety and risk management, especially as it is related to lifting, rigging, and hauling.

As a bonus, Matt was also able to hand out some Vic's gear to the folks he met at the college. We're grateful to have Matt and the whole crew here at Vic's committed to safety even while they're not on the job!



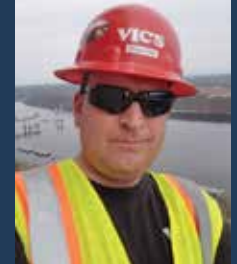


Pre-Construction Planning Team

Pre-construction services provide clients with a formal method for developing a full work scope, cost, and schedule to perform lift and haul projects. Vic's offers pre-construction services as a project managing tool that allows clients to fully understand and mitigate logistical, budgetary, and risk management challenges before work begins.



Josh Horsch
Vice President & COO
(651) 797-6235
jhorsch@vicsco.com



Mike Lins
Engineering Manager
(651) 797-6234
mlins@vicsco.com



Jimmy Widman
Crane Service Manager
(651) 797-6237
jwidman@vicsco.com



Nate Frantzick
Heavy Haul Manager
(651) 797-6252
nfrantzick@vicsco.com



Mike Crouse
Project Manager
(218) 464-7561
mrouse@vicsco.com



Jeremy Stuber
Project Manager
(218) 591-3474
jstuber@vicsco.com



Eric Arndt
Hibbing Manager
(218) 403-0008
earndt@vicsco.com



Jim Briggs
Twin Ports Manager
(218) 343-6639
jbriggs@vicsco.com



Lance Hjelmen
Operations Coordinator
(651) 423-7400
lhjelmen@vicsco.com



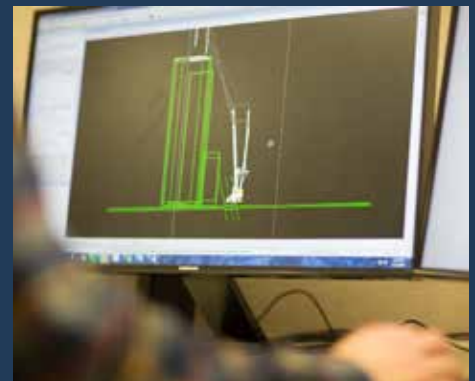
Troy Westley
PM / Estimator
(651) 797-6220
twestley@vicsco.com



Mark Tollefson
PM / Estimator
(651) 797-6236
mtollefson@vicsco.com



Rick Bons
PM / Estimator
(651) 797-6232
rbons@vicsco.com



Quality Solutions and Benefits

The pre-construction process takes out many of the unknowns of a project and reduces risks for project owners. Having an early and detailed site plan for your crane, rigging, or haul projects affords cost savings and helps eliminate run on costs or bid change orders. Cranes and other heavy lift equipment can be very expensive and most successful projects cannot afford to have these

resources sitting idle. From manpower to equipment, nothing is cheap. Early and proper planning can save a project unnecessary expenses and stress. Having the right resources at the right time and eliminating obstacles and unforeseen complications are the rewards of quality pre-construction planning.



Safety Photo Winner!

We'd like to recognize our Heavy Haul Department in conjunction with our GMK 350-ton crew. Their safety performance was exemplary while hoisting three chillers and boilers weighing 25,000 pounds each onto a 10th story rooftop. They also used a jack and slide system to

set the units through a roof structure. The challenges they faced were many, including traffic below, fall hazards, and metal roofs with snow and ice. The entire crew always took the proper precautions and took the time to complete their work safely.



◀ **ENTER TO WIN**

A VIC'S BRANDED JACKET!

Sign up to receive our quarterly newsletter and you'll be automatically entered to win. Go to vicso.com/win to sign up!