

VIC'S CRANE & HEAVY HAUL

LIFTING SAFETY TO A HIGHER LEVEL



◀ **ENTER TO WIN**

A VIC'S YETI ROADIE COOLER

Sign up to receive our quarterly newsletter and you'll be automatically entered to win. Go to vicsco.com/win to sign up!

Rosemount Office
(651) 423-7400

Hibbing Office
(218) 403-0008

Twin Ports Office
(715) 919-2025



Jimmy Widman,
Crane Service Manager

Summer Heats Up with More Jobs and Equipment

Since our last newsletter, the spread of COVID-19 has changed the way the world works, including for us here at Vic's. As summer rolls on and we see the construction season picking up steam, we want you to know that safety is still our number one priority.

After spending a few months with much of our office staff working from home, many have now returned to the office while continuing to practice social distancing and other safety protocols. Most of our projects have continued on as scheduled, and our field staff makes sure to follow any COVID-19 protocols asked of them on the job site.

As you can see on page one our newly opened Twin Ports location is already busy on projects around Superior. Our Hibbing location (page 6) recently played a key role in keeping shoppers at the Irongate Plaza cool and comfortable this summer. And our Rosemount location has been busier than ever, showcased in a recent project in downtown Minneapolis (page 4). We encourage you to sign up on our website for project updates like these for multiple reasons—one being the chance to win some cool Vic's gear.

New Additions to Our Fleet

As many of you know, Vic's takes pride in having the largest fleet of cranes and heavy haul equipment around. We're happy to report we have new additions to our fleet with a Grove GMK 6300L-I (350 ton) and Terex Demag AC250-I (300 ton). Both of these long boom cranes feature 263-feet of main boom as well as 69-feet of swing-away jib. These additions gives us added flexibility and helps ensure we can always provide customers with the right crane for the job, whenever and wherever it's needed.



If you have any questions about our equipment fleet, or have a job scheduled for the fall you'd like our help with, please call us with any estimating or scheduling needs.

A handwritten signature in black ink that reads "Jimmy Widman".

Jimmy Widman
Crane Service Manager



A Careful Conveyor Lift For The Twin Ports Office

Earlier this year, Vic's Crane & Heavy Haul opened a new location in the Twin Ports area, making it easier than ever for customers in Duluth, Superior and the surrounding region to use our services. Recently we performed an interesting lift in our expanding work area that involved a delicate relocation of industrial equipment.

The job involved taking apart, lifting, and safely moving two conveyors from their original location at a former Georgia Pacific property to a new one. Vic's moved the conveyors in ten different sections using a 165-ton Grove GMK unit CI65-I. The lift spanned over three days and was done with special care as the conveyors, which were used for making wood chips into press board, needed to be functional when reassembled.

The heaviest section of the conveyors weighed 22,000 pounds and was five feet wide, four feet high, and 30 feet long. In addition to moving the conveyors carefully, Vic's employees faced other challenges due to the angle of the conveyor and the position of the rollers on the conveyor sections. Each section had to be assessed for weight distribution and rigged carefully so that when hoisted they maintained the correct angle to detach from the next section easily.

Working with careful attention to detail, Vic's employees successfully removed the conveyor so it can be used in the future.





Vic's Gets Creative To Overcome A Bridge Weight Limit Challenge

While crossing a creek on a haul in Iowa, Vic's employees were presented with a bridge weight limit challenge that required them to think outside the box, or in this case, the bridge. The payload was a transformer that when combined with the weight of the heavy haul trailers reached more than 200 tons, but they needed to cross a bridge with a weight limit of only 40 tons. It was time to get creative.

Several of Vic's staff members worked on a solution with project stakeholders from ITC and Alliant Energy for a way to safely cross the bridge. To make the difficult move, Vic's used three trailers, one 26-axle trailer and two 6-axle trailers. The two 6-axle trailers were maneuvered so one was on each side of the bridge, sitting parallel to the 26-axle trailer, which spanned the bridge itself. The transformer was then moved across the deck of the trailers using a hydraulically activated push slide rail system. The placement of trailers and the sliding of the transformer helped split the weight between the trailers and the bridge so that the haul remained safely under the 40-ton bridge weight limit.

The bridge transfer took 12 employees to complete and was a unique addition to Vic's hauling repertoire. Bridges often turn out to be limiting factors for affordable travel of super heavy loads, but for this crane and heavy haul company it was just another day at the office.







Giving The Minneapolis Public Service Building A Lift

This fall, a new City of Minneapolis Public Service Building is slated to open downtown, at 505 Fourth Ave. S. Recently, Vic's Crane & Heavy Haul joined forces with Mortenson Construction and Modern Piping to give the project a boost. The job involved lifting three chiller pumps to the 10th floor of the building and then positioning them so they would be ready for use.

Each chiller pump weighed approximately 25,000 pounds and was moved with a 350-ton crane in a luffing jib configuration. Once the units were set down through a roof opening, they were moved 70 feet across the floor via a slide track system into their final position. The lift required only four days to complete but involved some complicated preparation. Preplanning included creating specific engineered drawings that illustrated the capabilities and clearances needed to perform the work within the specific safety requirements of the site.

Once on the job site, Vic's crew faced the challenges of performing a lift in crowded urban area. Space downtown is already limited, but this lift had even less space to maneuver due to light rail tracks bordering one side of the building and the project's loading dock on the other side. Additionally, a tower crane was installing glass panels on the building at the same time Vic's was lifting the chiller pumps. It took constant communication and scheduling flexibility between the two cranes to complete the jobs in tandem. Despite all these challenges, Vic's staff members were able to safely make the lift on schedule.

The Public Service Building will include City spaces to deliver services to the public, offices for City employees and a rooftop garden. The building also plans to feature bird-safe glass windows, a public art collection and LEED Gold Certification.







Crane Service At The Iron Range's Irongate Plaza

The climate in Minnesota varies widely from summer to winter. It's important to make sure you can provide your customers with comfortable shopping temperatures all year round. For this reason, Vic's Crane and Heavy Haul was hired by Range Cornice Heating and Sheet Metal to provide crane services to move new heating and cooling units to Iron Range shopping hub, Irongate Plaza.

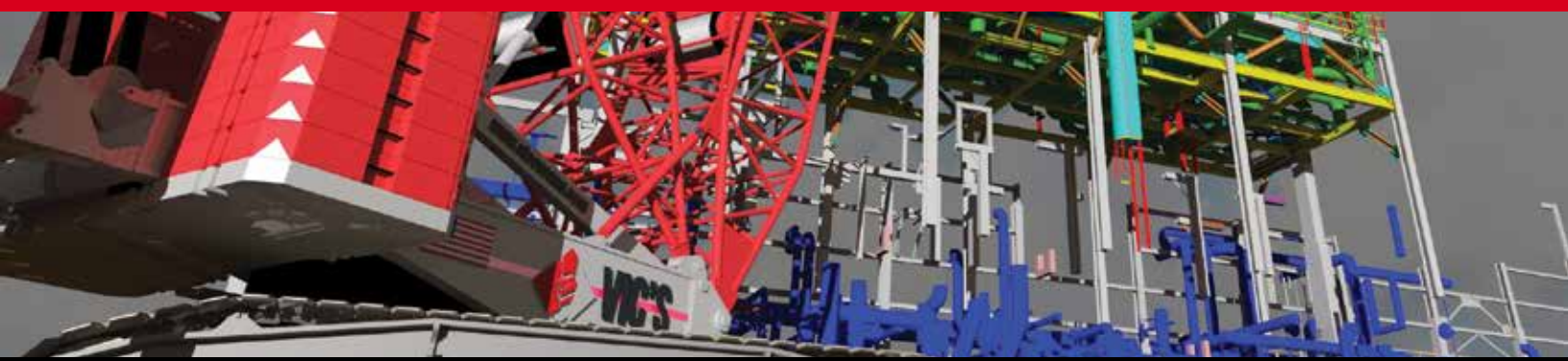
The lifting job was fairly routine and took approximately two hours to complete. Vic's utilized a Grove 150-ton all-terrain crane to remove three old heating and cooling units and replace them with new ones. Each unit weighed around 2,500 pounds.

There were two main challenges for this lift. The first was that due to the location of the units on the roof,

the crane operator was unable to see the rooftop area from his position on the ground. Vic's addressed this issue by placing another employee on the roof and using two-way radios to communicate and coordinate the lift. The other challenge was that Vic's staff needed to be mindful of preserving the pavement in the plaza parking lot, which was thawing out from a long winter. Additionally, to make the lifts, the crane needed to be set up in two different locations throughout the move.

Vic's employees successfully completed the removal and replacement of the heating and cooling units with no issues. So next time Irongate Plaza is abuzz with customers, they'll be as comfortable as can be.



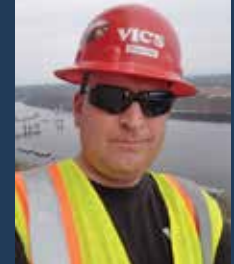


Pre-Construction Planning Team

Pre-construction services provide clients with a formal method for developing a full work scope, cost, and schedule to perform lift and haul projects. Vic's offers pre-construction services as a project managing tool that allows clients to fully understand and mitigate logistical, budgetary, and risk management challenges before work begins.



Josh Horsch
Vice President & COO
(651) 797-6235
jhorsch@vicsco.com



Mike Lins
Engineering Manager
(651) 797-6234
mlins@vicsco.com



Jimmy Widman
Crane Service Manager
(651) 797-6237
jwidman@vicsco.com



Nate Frantzick
Heavy Haul Manager
(651) 797-6252
nfrantzick@vicsco.com



Mike Crouse
Project Manager
(218) 464-7561
mrouse@vicsco.com



Jeremy Stuber
Project Manager
(218) 591-3474
jstuber@vicsco.com



Eric Arndt
Hibbing Manager
(218) 403-0008
earndt@vicsco.com



Jim Briggs
Twin Ports Manager
(218) 343-6639
jbriggs@vicsco.com



Lance Hjelmen
Operations Coordinator
(651) 423-7400
lhjelmen@vicsco.com



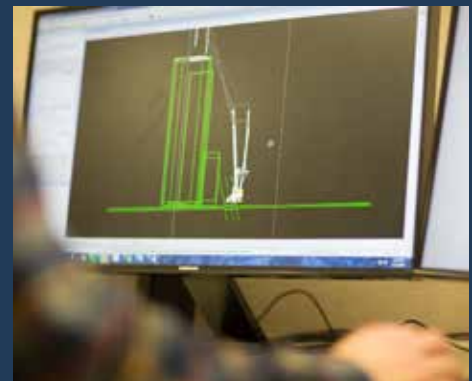
Troy Westley
PM / Estimator
(651) 797-6220
twestley@vicsco.com



Mark Tollefson
PM / Estimator
(651) 797-6236
mtollefson@vicsco.com



Rick Bons
PM / Estimator
(651) 797-6232
rbons@vicsco.com



Quality Solutions and Benefits

The pre-construction process takes out many of the unknowns of a project and reduces risks for project owners. Having an early and detailed site plan for your crane, rigging, or haul projects affords cost savings and helps eliminate run on costs or bid change orders. Cranes and other heavy lift equipment can be very expensive and most successful projects cannot afford

to have these resources sitting idle. From manpower to equipment, nothing is cheap. Early and proper planning can save a project unnecessary expenses and stress. Having the right resources at the right time and eliminating obstacles and unforeseen complications are the rewards of quality pre-construction planning.



Sweet Streets Donation

Our focus on safety comes in many forms. Vic's Twin Ports location recently donated \$500 to the City of Superior's Sweet Streets program that rewards young bicycle riders for wearing helmets with free ice cream. Pictured here is Twin Ports Manager, Jim Briggs (middle) with the owner of Sweden Sweets (left), and, Jim Paine the Mayor of Superior (right).



Safety Photo Winner!

We are certainly proud of all of our boom truck operators, but we would like to recognize Troy Bisodeau and Arnold Johnson for their strong operational safety. More specifically, Troy and Arnold have extensively supported arborist operations, displaying both strong skill sets and an unwavering discipline to the regulatory requirements. Additionally, they have taken the time to educate arborist management that they work with on best practices and OSHA guidance with regards to tree work and powerline operations.



◀ **ENTER TO WIN**

A VIC'S YETI ROADIE COOLER

Sign up to receive our quarterly newsletter and you'll be automatically entered to win. Go to vicso.com/win to sign up!